



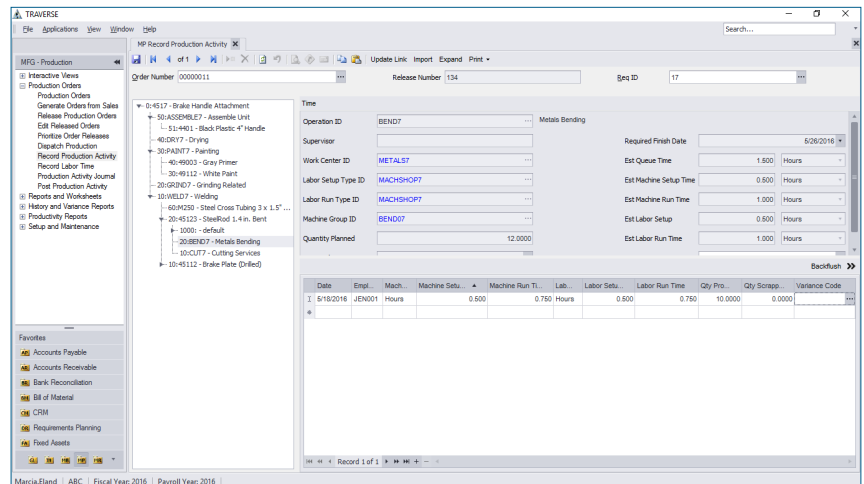
PRODUCTION Manufacturing

Production is where it all comes together. Your software must be able to tell you today's production status, what is going to happen next, and what happened yesterday. The TRAVERSE Manufacturing Production application is up to the task. Online inquiry into existing production orders shows percentage complete based on time and materials and gives you detailed information of the status of each production process.

Once you create them, you can edit production orders via the visual editor in a drill-down manner for the flexibility your manufacturing environment requires. You can import activity from an external source such as an automated time card or bar code data collection system, or you can enter it manually.

Use videos and pictures to assist in the process. A sophisticated dispatch process allows you to set the production sequence to keep things moving smoothly.

See when, where, and why variances took place in terms of time, usage quantities, and final production.



The Record Production Activity function allows you to tell the system how much of a raw material or stocked subassembly was used, how much scrap was incurred, labor and machine times, subcontracting information, and so on.

- Seamless optional interface to Sales Order, General Ledger, and Payroll.
- Easily handle lotted and serialized inventory, and perform multiple releases per production order.



Applied Business Services, Inc.

1-800-451-7447 | www.appliedbusinessservices.com

PRODUCTION

Features:

- Perform visual drilldown and production order editing.
- Use priority-based dispatching.
- Release orders online and in batches.
- Update inventory quantities online.
- Track problems by variance code.
- Print barcodes on worksheets.
- Set up multiple costing methods.
- Conduct online status inquiries of ongoing production.
- Use multimedia references for operations and materials.
- Employ multiple units of measure.
- Generate automated production orders from sales orders.
- Perform variance analysis for time, material usage, and production.
- Back-flush at multiple levels.
- Retrieve scrap history.

Production Reports:

- Sales Order Analysis
- Production Schedule
- Requirement Availability
- Production Picking List
- Order Traveler
- Subcontracted Services
- Dispatch List
- Order Status
- Work in Process Valuation
- Employee Time Log
- Work Center Load Profile
- Resource Availability
- Subcontractor Status Report
- Cost Variance Analysis
- Time Variance Analysis
- Production Variance Analysis
- Transaction History
- Production History
- Variance Code History

Est Start Date	Est Finish Date	Order No	St	Ret No	Customer ID	Assembly ID	Revision No	Sales Order	Customer PO Number	Location ID	Quantity	Planner
4/8/2016	4/22/2016	00000013	In Pr...	701	Dad030	M2010	4	1351	7541-42	MN0002	7.0000	JAC350
4/16/2016	4/30/2016	00000012	In Pr...	3	Cal017	4517	003	1234	1298736	MN0002	40.0000	JAC350
4/26/2016	5/10/2016	00000017	Plan...	745	1008e	4517	003	1644	7842-52.14	MN0002	25.0000	JAC350
5/13/2016	5/27/2016	00000011	In Pr...	134	AB008	4517	003	1222	AB-90812	MN0002	12.0000	JAC380
5/13/2016	5/18/2016	00000014	New	254	200Tay	M2011	2	1455	PO901.25	MN0002	5.0000	JCN100
5/18/2016	5/31/2016	00000015	New	658	Cyp034	M2500	3	1651		MN0002	25.0000	SAN100
5/25/2016	6/1/2016	00000016	New	741	Cyp034	M2501	5	1621	QI-9876	MN0002	50.0000	SAN100

Powerful interactive views provide access to key status information for in-process orders.



Applied Business Services, Inc.

1-800-451-7447 | www.appliedbusinessservices.com